



# Shalom Mennonite Congregation

January 10, 2021 | Shalom-at-Home #43

---

*Krista Showalter Ehst, Worship Leader*

*Melody Mast, Music Leader*

*Barbara Moyer Lehman, Children's Time*

*Brian Bolton, Speaker*

*Hannah Kelley, Zoom Host*

## GATHERING

Prelude

*Drive out the Darkness*

Centering Bell

Gathering Song

*God of the Bible*

STJ 27

Welcome & Call to Worship

One: Sometimes, the world seems to flood us with violence and fear. What, then, should we do?

**All: Step into the waters of Sacred mystery, leaning into the hope of transformation.**

One: Sometimes, it seems that we cannot possibly make a difference. What, then, should we do?

**All: Dare to live out love and justice, leaning into Shalom even when we're not sure it can be accomplished.**

One: Sometimes, we feel alone and afraid. What, then, should we do?

**All: Link arms with riverside sojourners, leaning into the power of courageous solidarity.**

One: God who is like a wild river: help us to step together into the waters; open us to the possibilities of new life.

Hymn

*Let justice roll like a river*

STS 33

## HEARING THE WORD

Scripture

Luke 3:1-22

Children's Time

Sermon

*What then shall we do?*

## RESPONDING

Hymn

*We are one in the Spirit*

New Member Blessing

Barbara Moyer Lehman

Bethany Chupp

John Lehman

Mim Godshall  
Sue Edwards

**Congregation: We welcome you with joy into our community! We covenant to share with you in friendship, giving and receiving support, praying for each other, living out the way of Jesus, trusting together in the guidance of the Spirit, and making God's justice and love more real in the world.**

**Hymn** *When Pain or Sorrow*  
**Prayers of the People** *Lord, listen to your children*  
**Offering**

**SENDING**  
**Introductions & Announcements**  
**Benediction**

**BreakOut Groups – an optional opportunity to talk for a few minutes with others gathered on the following prompts.**

- 1) Tell us your name(s) and where you are
- 2) What has been one good thing and one challenging thing about this experience in the past week?
- 3) Closing thought, prayers or pass the peace.

## **ANNOUNCEMENTS**

### **Congregational Meeting, Sunday, January 24, immediately following worship.**

In preparation for the meeting, you are encouraged to read the email of Jan. 8 titled: [\*Shalom Financial Capacity Survey Follow-up, and a Follow-up Survey\*](#), as well as the agenda and accompanying materials which will be emailed out soon.

---

### **Shalom's Everence money to go for Immigrant Relief during the time of COVID-19**

The Mission and Service team was tasked with deciding how to distribute \$4500 that Shalom received from Everence during the past year. Knowing that many local immigrants would not receive COVID-19 relief checks through the federal government the team decided to concentrate in this area. Here is how the money will be distributed:

\$3000 for immigrants who will not receive relief checks from the federal government. This will be distributed through COSPU which is a local immigrant advocacy group.

\$1500 will go to Vine and Fig to help them pay local immigrants that are working for them. Vine and Fig also will have the option of passing on some of that money to the Northeast Community Association for a solar project on the old Broad Street Mennonite Church.

---

### **Take a moment and nominate someone to serve on Shalom's Administrative Council.**

Who would you like to see as a steward of Shalom's vision and administrative decision-making for at least the next 2 years at Shalom? In 2021 we have one vacancy that needs to be filled. Nominations can be [\*submitted online here\*](#) within the next two weeks. We will bring a slate of nominees for this and all other councils, teams, and committees to our congregational meeting on January 24 for affirmation. -- [\*Cathy Smeltzer Erb\*](#), *Administrative Council Chair*

---

### **Jubilee Sharing Fund update**

Thank you for your generous contributions to the Jubilee Sharing

Fund effort announced on Dec 13. The results of the amounts given and distributed will be prayerfully shared during our January 17 worship service when the morning's scripture portrays Jesus reading the same Isaiah scripture in the Temple that we read on Dec 13.

---

### **Upcoming Birthdays:**

- Virginia Showalter – January 12
- Freddie Gonzales Miller – January 13
- Anabel Showalter Ehst – January 15

### **Budget Report | January 3, 2021**

<u>ACTUAL</u>		<u>BUDGETED INCOME TO DATE *</u>	
Weekly Offering	\$1,608.58	Weekly Offering	\$3,648.58
January	\$1,608.58	Avg. Monthly	\$15,810.52
YTD	\$1,608.58	YTD	\$3,648.58

*\* based on the 2020 budget --- 2021 budget is yet to be approved on 1/24*

*Regular offering, as well as donations to other funds can all be made online at <https://shalommc.breezechms.com/give/online> as well as mailed into EMU, Campus Box 8, Harrisonburg, VA, 22802*

*Visitors: Welcome to Shalom-at-Home! If you would like to be on our mailing list or be contacted by someone on pastoral team, please send your name and email to [office@shalommc.org](mailto:office@shalommc.org).*

---

Shalom Mennonite Congregation is a welcoming and inclusive community rooted in Jesus' radical call to love, justice, and peace.

We seek to grow our welcome and inclusion as we deepen our spirituality, build meaningful relationships, work for peace and social justice, and cultivate diverse community connections.

Visit our website at [shalommc.org/vision](http://shalommc.org/vision) to find out more about who we are, what we do, and what we strive for. You can also read there about our commitment statements regarding inclusion of people who identify as LGBTQIA+, and our policy and practices around maintaining an environment that protects children from abuse.

---

**Address** EMU, Campus Box 8, Harrisonburg, VA 22802  
**Office** 1086A Smith Ave  
**Phone** 432-1659

**Staff:** Brian Bolton, Pastor; Carrie Yoder, Communications Specialist, Nursery & Safe Congregation Policy Administrator; Jooyeon Kim, Bookkeeper.

**Administrative Council & Congregational Chair:** Cathy Smeltzer Erb

Please contact any member of the Safe Congregation Team if you have questions or concerns regarding inappropriate sexual conduct, violence, intimidation, or physical abuse by child-care workers, teachers, or others in the congregation: Kate Clark, 810-1067; Ross Erb, 435-0350; Anne Martin, 432-1086; Brian Bolton, 830-8381.

# God of the Bible

FRESH AS THE MORNING\* 55. 54. 55. 54 with refrain

D A/C# G/B D Bm D/F#

1 God of the Bi - ble, God in the Gos - pel, hope seen in Je - sus,  
 2 God in our strug - gles, God in our hun - ger, suf - fer - ing with us,  
 3 Those with - out sta - tus, those who are noth - ing, you have made roy - al,  
 4 Not by your fin - ger, not by your an - ger will our world or - der  
 5 Hope we must car - ry, shin - ing and cer - tain through all our tur - moil,

Em A Bm D/A G D

hope yet to come, you are our cen - ter, day - light or dark - ness,  
 tak - ing our part, still you em - pow' r us, moth - er - ing Spir - it,  
 gift - ed with rights, cho - sen as part - ners, mid - wives of jus - tice,  
 change in a day, but by your peo - ple, fear - less and faith - ful,  
 ter - ror and loss, bond - ing us glad - ly one to the oth - er,

Em D/F# G Asus A

free - dom or pris - on, you are our home.  
 feed - ing, sus - tain - ing, from your own heart.  
 birth - ing new sys - tems, light - ing new lights.  
 small pa - per lan - terns, light - ing the way.  
 till our world chang - es fac - ing the cross.

\*Original title

Text: Shirley Erena Murray

Copyright © 1996 Hope Publishing Company, Carol Stream, IL 60188. All rights reserved. Used by permission.

Music: Tony E. Alonso

Copyright © 2001 GIA Publications, Inc.

Refrain

D A/D G/D D Em D/F#

*Soprano (Melody)*

Fresh as the morn - ing, sure as the sun - rise, God al - ways faith - ful,

*Alto*

Fresh as the sun - rise, al - ways faith - ful,

*Tenor/Bass*

Fresh as the sun - rise, al - ways faith - ful,

Em A D A/D G/D D

you do not change. Fresh as the morn - ing, sure as the sun - rise,

*Alto*

you do not change. Fresh as the sun - rise,

*Tenor/Bass*

you do not change. Fresh as the sun - rise,

Em D/F# G/A D A/D

God al - ways faith - ful, you do not change.

*Alto*

al - ways faith - ful, you do not change.

*Tenor/Bass*

al - ways faith - ful, you do not change.

G/D D A/D G/D D

you do not change.



# 33 Let justice roll like a river

LET JUSTICE ROLL Irregular with refrain

Refrain

F B $\flat$  Cm7 B $\flat$ /D E $\flat$  E $\flat$ /G E $\flat$ /B $\flat$  B $\flat$

Let jus - tice roll like a riv - er,

E $\flat$ /B $\flat$  B $\flat$  F Gm7 F D Gm6/E D7/F $\sharp$  Gm

and wash all op - pres - sion a - way;

B $\flat$ 7/F B $\flat$ 7 E $\flat$  B $\flat$ /D Cm7

come, O God, and take us, move and

B $\flat$ /D E $\flat$  C7/E Fsus

shake us, come now, and make us a - new,

F Cm7 Fsus F B $\flat$  E $\flat$ /B $\flat$  B $\flat$  B $\flat$ /A To Verses

that we might live just - ly like you.

Text: Marty Haugen, based on Amos 5:21-24, 8:4; Micah 4:3-4, 6:8; Joel 2:12-14

Music: Marty Haugen

Text and Music copyright © 1991 GIA Publications, Inc.

Verse 1

Gm D/F# D/E D Gm Gm Gm/A Gm/Bb Cm7

1 Take from me your ho-ly feasts, all your of-f'rings

F Eb/F Eb/Bb Bb Eb/Bb Bb D Gm6/E D/F#

and your mu-sic; let jus-tice flow like

Cm/G Gm Gm/D Gm Gm/A Gm/Bb C7add9 Gm7add9

wa-ters, and in-teg-ri-ty like an

C7add2 C7add9 F Cm7 F Fsus F Gm7

ev-er-flow-ing stream. To Refrain

Verses 2-5

Gm D/F# D/E D Gm Gm Gm/A Gm/Bb

2 How long shall we wait, O God, for the

3 Hear this, all of you who use the poor in your

4 E-ven now re-turn to me, let your

5 You have been told the way of life, the

Cm7 Gm/F F Eb/F Bb Eb/Bb Bb D7

2 day of your mer-cy to dawn, the

3 thirst of pow-er and rich-es: the

4 hearts be bro-ken and hum-ble, for

5 way of jus-tice and peace; to

Welcome the Light

Gm D7 D7/E D7/F# Gm Ebm6 Ebm6/F Ebm6/Gb

2 day we beat our swords in - to ploughs, when your  
3 Lord will turn your laugh-ter to tears, on the  
4 I am gra - cious, gen-erous and kind; come and  
5 act just - ly, to love gent - ly, and

Detailed description: This system contains the first three staves of music. The top staff is the vocal line with lyrics. The middle and bottom staves are piano accompaniment. Chord symbols are placed above the piano staves. The key signature has two flats (Bb and Eb), and the time signature is 4/4. The lyrics are: '2 day we beat our swords in - to ploughs, when your / 3 Lord will turn your laugh-ter to tears, on the / 4 I am gra - cious, gen-erous and kind; come and / 5 act just - ly, to love gent - ly, and'.

Gm7 C7add9 Cm/F Cm7 F Gm7 To Refrain

2 peace reigns o - ver the earth?  
3 won - drous Day of our God.  
4 seek the mer - cies of God.  
5 walk hum - bly with God.

Detailed description: This system contains the second three staves of music. The top staff is the vocal line with lyrics. The middle and bottom staves are piano accompaniment. Chord symbols are placed above the piano staves. The key signature has two flats (Bb and Eb), and the time signature is 4/4. The lyrics are: '2 peace reigns o - ver the earth? / 3 won - drous Day of our God. / 4 seek the mer - cies of God. / 5 walk hum - bly with God.' The system ends with a double bar line and a fermata over the final chord, with the text 'To Refrain' written above.

## **We are one in the Spirit**

We are one in the Spirit, we are one in the  
Lord x2

And we pray that our unity will one day be  
restored

And they'll know we are Christians by our  
love, by our love

Yes they'll know we are Christians by our love

We will work with each other, we will work  
side by side x2

And we'll guard each one's dignity and save  
each one's pride

And they'll know we are Christians by our  
love, by our love

Yes they'll know we are Christians by our  
love.

We are one in the Spirit, we are one in the  
Lord x2

And we pray that our unity will one day be  
restored

And they'll know we are Christians by our  
love, by our love

Yes, they'll know we are Christians by our  
love

# When Pain or Sorrow / Hold On

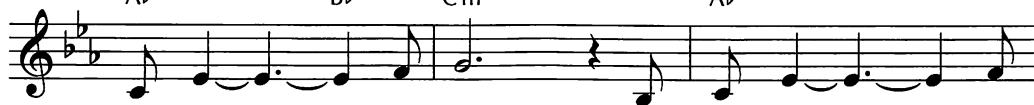
ERB 10.10.11.8 with refrain

Capo 3: (C) Eb (F/C) Ab/Eb (F/C) Ab/Eb (C/E) Eb/G



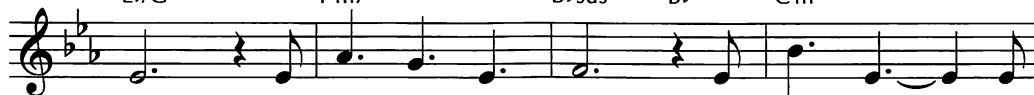
1 When pain or sor - row is  
 2 If God is si - lent when  
 3 And when it looks like there's

(F) Ab (G) Bb (Am) Cm (F) Ab



too much to bear; when your heart feels  
 you need to hear that you're not a -  
 no end in sight, know all that is

(C/E) Eb/G (Dm7) Fm7 (G sus) Bbsus (G) Bb (Am) Cm



numb, un - a - ble to care, when faith seems so  
 lone, that com - fort is near; if you are a -  
 wrong can still be made right. You're ne - ver a -

(Em/G) Gm/Bb (F) Ab (Fm) Abm (C/E) Eb/G



point - less that you can - not pray, when  
 ban - doned when you need a friend, when  
 lone; God has prom - ised to be with

(Dm) Cm (C/E) Fm Eb/G (F) Ab (D/F#) F/A (G7sus) Bb7sus (G) Bb (C) Eb



no one knows quite what to say, then  
 all good things come to an end, then  
 us e - ven when we can't see, so

Refrain (F maj7) Abmaj7 (C/E) Eb/G (E7sus4) G7sus4 (E7) G7 (Am) Cm (F) Ab



hold on, hold on, to find a



(C/E) (Am7) (Dsus4) (D) (Gsus4) (C7)  
 Eb/G Cm7 Fsus4 F Bbsus4 Eb7

way to get through. And when your

(Fmaj7) (C/E) (Esus4) (E7) (Am) (Em/G)  
 Abmaj7 Eb/G Gsus4 G7 Cm Gm/Bb

hope is gone and you can't hold on,

(F) (G7sus) (C) (F/C) (C)  
 Ab Bb7sus Eb Ab/Eb Eb  
*Last time*

we will hold on to you.