



Shalom Mennonite Congregation

November 27, 2020 | Shalom-at-Home #38
NL312 Advent 1 | Advent Promises: Hope

Barbara Moyer Lehman, Worship Leader

Jaime Miller, Children's Time

Melody Mast, Music Leader

Barbara Moyer Lehman, Prayers of the People

Carrie Yoder, Zoom Host

GATHERING

Centering Bell

Gathering Song *Praise the One who breaks the darkness* STS 1

Welcome

Lighting the Candle of Hope

Today, we light a candle of Hope.

Hope rolls away the heaviest stone.

Hope prays with the windows open.

Hope is how not to get eaten by Empire.

While earthly powers have bound us with fear,

Our Rescuer has handed us the key: **Hope**.

***This Advent we recommit ourselves to a living
Hope - for ourselves, for our neighbors and
enemies, and for the world.***

Hymn

Hope is a candle

STS 15

Hymn

O come O come Emmanuel

HWB 172

HEARING THE WORD

Children's Time

Scripture

Daniel 6:6-27

Reflections

Children's Time

RESPONDING

Song

*Our Deliverance**

Prayers of the People

Offering

SENDING

Introductions & Announcements

Benediction

Holy Child within the manger

STS 28

BreakOut Groups - an optional opportunity to talk for a few minutes with others gathered on the following prompts.

- 1) Tell us your name(s) and where you are
- 2) What has been one good thing and one challenging thing about this experience in the past week?
- 3) Closing thought, prayers or pass the peace.

**Our Deliverance*, written by Emily Saliers

ANNOUNCEMENTS

Introducing the Kinfolk program: Are you interested in building a cross-generational relationship with someone in our congregation? Would you or your family benefit from giving and receiving a little extra care during this challenging season? The formation team is starting a new program with the goal of connecting families with young children with older members of our congregation so that they can provide mutual support and companionship for one another. These relationships can contribute to the faith formation of everyone involved. If you would like to know more about this program, click on [this link](#) to read more details or contact Carrie Wenger (carriedw@shalommc.org). If you wish to participate in the program, please use [this form](#) to sign-up by the end of November.

Glimpses of Shalom: Daily Advent Snapshots
What does your spirit hold in Advent 2020? Worship Team invites each of you to consider sharing a piece of your experience of this unprecedented season. We plan to email out daily 'snapshots' of throughout Advent of what you submit: written reflections, photographs, images, song recordings, poems, or any other email-able medium that expresses a piece of your current journey.

If you're interested in contributing, email [Krista Showalter Ehst](#) to receive more details.

To sign up to receive these daily emails, please [click here and update your Shalom mailing list profile](#), or simply reply to this message to let us know.

Financial

Capacity

Survey

Shalom is trying to assess our financial capacity for increasing pastoral staff in 2021 and beyond. Please take a moment to [complete this survey](#) to let us know how much of your resources and Shalom's shared resources we can count on. This information will inform follow-up proposals and inquiries about priorities for that time.

Upcoming Birthdays:

Willem Kishbaugh – November 28

Matea Wenger – November 28

Jeff Heie – November 29

Mike Herr – November 30

Budget Report | November 22, 2020

<u>ACTUAL</u>		<u>BUDGETED</u>	
Weekly Offering	\$230.00	Weekly Offering	\$3,648.58
November	\$7,450.00	Avg. Monthly	\$15,810.52
YTD	\$146,110.91	YTD	\$171,483.82

Regular offering, as well as donations to other funds can all be made online at <https://shalommc.breezechms.com/give/online> as well as mailed into EMU, Campus Box 8, Harrisonburg, VA, 22802

Visitors: Welcome to Shalom-at-Home! If you would like to be on our mailing list or be contacted by someone on pastoral team, please send your name and email to office@shalommc.org.

Shalom Mennonite Congregation is a welcoming and inclusive community rooted in Jesus' radical call to love, justice, and peace.

We seek to grow our welcome and inclusion as we deepen our spirituality, build meaningful relationships, work for peace and social justice, and cultivate diverse community connections.

Visit our website at shalommc.org/vision to find out more about who we are, what we do, and what we strive for. You can also read there about our commitment statements regarding inclusion of people who identify as LGBTQIA+, and our policy and practices around maintaining an environment that protects children from abuse.

Address EMU, Campus Box 8, Harrisonburg, VA 22802
Office 1086A Smith Ave
Phone 432-1659

Staff: Brian Bolton, Pastor; Carrie Yoder, Admin Assistant, Nursery & Safe Congregation Policy Administrator; Jooyeon Kim, Bookkeeper.

Administrative Council & Congregational Chair: Anne Martin

Please contact any member of the Safe Congregation Team if you have questions or concerns regarding inappropriate sexual conduct, violence, intimidation, or physical abuse by child-care workers, teachers, or others in the congregation: Kate Clark, 810-1067; Ross Erb, 435-0350; Anne Martin, 432-1086; Brian Bolton, 830-8381.

Praise the One who breaks the darkness 1

NETTLETON 87. 87D



- 1 Praise the One who breaks the dark-ness with a lib - er - at-ing light;
- 2 Praise the One who blessed the chil-dren with a strong yet gen-tle word;
- 3 Praise the One true love in - car-nate: Christ, who suf-fered in our place;



praise the One who frees the pris-'ners, turn-ing blind-ness in - to sight.
 praise the One who drove out de-mons with a pierc-ing, two-edged sword.
 Je - sus died and rose for man - y that we may know God by grace.



Praise the One who preached the gos - pel, heal - ing ev - 'ry dread dis - ease,
 Praise the One who brings cool wa - ter to the des - ert's burn - ing sand;
 Let us sing for joy and glad - ness, see - ing what our God has done.



calm - ing storms and feed - ing thou - sands with the ver - y bread of peace.
 from this well comes liv - ing wa - ter quench - ing thirst in ev - 'ry land.
 Praise the one re - deem - ing glo - ry; praise the One who makes us one.



Text: Rusty Edwards

Copyright © 1987 Hope Publishing Company, Carol Stream, IL 60188. All rights reserved. Used by permission.

Music: American folk melody, J. Wyeth's *Repository of Sacred Music, Part Second*, 1813

15

Hope is a candle

GALLOWAY TAM 11 10. 11 8



1 Hope is a can - dle, once lit by the proph - ets,
 2 Peace is a can - dle to show us a path - way,
 3 Love is a can - dle whose light makes a cir - cle,
 4 Joy is a can - dle of mys - t'ry and laugh - ter,
 5 Christ is the light that the proph - ets a - wait - ed,



1 nev - er con - sumed, though it burns through the years;
 2 threat - ened by gusts from our rage and our greed.
 3 where ev - 'ry face is the face of a friend.
 4 mys - t'ry of light that is born in the dark;
 5 Christ is the li - on, the lamb, and the child.



1 dim in the day - light of pow - er and priv - i-lege—
 2 Friend, feel no en - vy for those in the shad - ows—
 3 Wid - en the cir - cle by shar - ing and giv - ing—
 4 laugh - ter at hear - ing the voice of an an - gel,
 5 Christ is the love and the mys - t'ry and laugh - ter—



1 when they are gone, hope will shine on.
 2 vio - lence and force their dead - end course.
 3 God's ho - ly dare: love ev - ery - where.
 4 ev - er so near, cast - ing out fear.
 5 can - dles, make way! Christ is the day.

172 O come, O come, Immanuel

VENI EMMANUEL LM with refrain



1 O come, O come, Im - man - u - el, and ran - som cap - tive
 2 O come, thou Rod of Jes - se, free thine own from Sa - tan's
 3 O come, thou Day - spring, come and cheer our spir - its by thine
 4 O come, thou Key of Da - vid, come and o - pen wide our
 5 O come, thou Wis - dom from on high, and or - der all things
 6 O come, De - sire of na - tions, bind all peo - ples in one



1 Is - ra - el, that mourns in lone - ly ex - ile
 2 tyr - an - ny. From depths of hell thy peo - ple
 3 ad - vent here. Dis - perse the gloom - y clouds of
 4 heav'n - ly home. Make safe the way that leads on
 5 far and nigh. To us the path of knowl - edge
 6 heart and mind. Bid en - vy, strife, and quar - rels

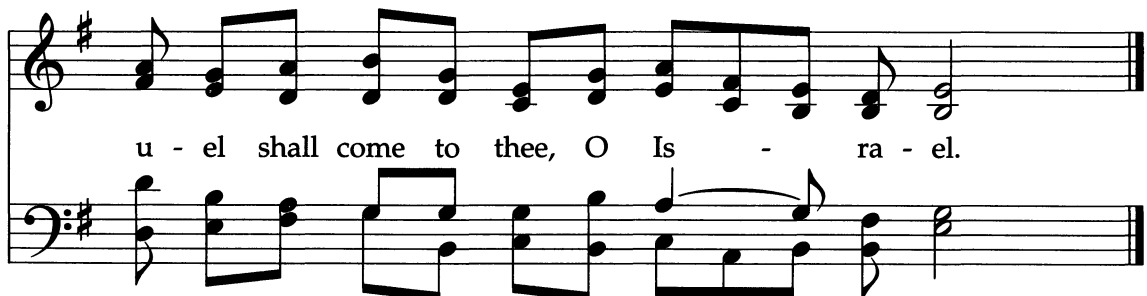


1 here, un - til the Son of God ap - pear.
 2 save, and give them vic - t'ry o'er the grave.
 3 night, and death's dark shad - ow put to flight.
 4 high, and close the path to mis - er - y.
 5 show, and cause us in thy ways to go.
 6 cease. Fill the whole world with heav - en's peace.

Refrain



Re - joi - ce! Re - joi - ce! Im - man -



u - el shall come to thee, O Is - ra - el.

28 Holy Child within the manger

JOYOUS LIGHT 87. 87D

1 Ho - ly Child with-in the man-ger, long a - go, yet ev-er near;
2 Once a - gain we tell the sto - ry—how your love for us was shown,
3 Ho - ly Child with-in the man-ger, lead us ev - er in your way,

come as friend to ev-'ry stran-ger, come as hope for ev-'ry fear.
when the Im - age of your glo - ry wore an im - age like our own.
so we see in ev-'ry stran-ger how you come to us to - day.

As you lived to heal the bro - ken, greet the out - cast, free the bound,
Come, en - light - en with your wis - dom, come and fill us with your grace,
In our lives and in our liv - ing give us strength to live as you,

as you taught us love un - spo - ken, teach us now where you are found.
may the fire of your com - pas - sion kin - dle ev - 'ry land and race.
that our hearts might be for - giv - ing and our spir - its strong and true.

Text: Marty Haugen

Music: Marty Haugen

Text and Music copyright © 1987 GIA Publications, Inc.