



Shalom Mennonite Congregation

May 3, 2020 | Easter 4 & Shalom-at-Home #8

Kirsten Beachy, Worship Leader

Brian Bolton & Friends, Music Leaders

Joel Yoder, Children's Time

Jane Peifer, Speaker

Carrie Yoder, Zoom Host

GATHERING

Centering Bell

Gathering Song

Halle, halle, hallelujah

STJ 17

Welcome & Call to Worship

Leader: Come, let us worship,

People: for we are the people of God's pasture.

Leader: Come, let us worship and bow down,

People: for we are the sheep of God's hand.

Leader: Come, let us worship and bow down before the Lord,
our Maker.

All: For the Lord is our God, and God desires our worship!

Hymn

Savior, like a Shepherd, lead us

HWB 355

HEARING THE WORD

Scripture

John 10:1-15

Children's Time

Sermon

RESPONDING

Hymn

Open my eyes, Lord

STS 65

Blessing the Graduates

**Aaron Gusler
Emily Powell
Lindsay Acker
Noah Heie**

On this day of celebration and opportunity,

May God bless you with discomfort

At easy answers, half-truths, and superficial relationships

So that you may live deep within your heart.

May God bless you with holy anger

At injustice, oppression, and exploitation of people,

So that you may work for justice, freedom and peace.

May God bless you with tears
To shed for those who suffer pain, rejection, hunger and war,
So that you may reach out your hand to comfort them and
To turn their pain into joy.

May God bless you with enough foolishness
To believe that you can make a difference in the world,
So that you can do what others claim cannot be done
To bring justice and kindness to all of God's children.

And may God bless you with love
For yourself, your neighbor, for the earth, and God
So that you will find unflagging hope and joy in all that you do.

Hymn *Give us bread for the journey*

Prayers of the People

Offering *Abide with me* HWB 653

SENDING

Introductions & Announcements

Benediction

Breakout Groups – an optional opportunity to talk for a few minutes with others gathered on the following prompts:

- 1) Tell us your name(s) and where you are
- 2) What has been one good thing and one challenging thing about this experience in the past week?
- 3) Closing thought, prayer, or pass the peace

ANNOUNCEMENTS

Patchwork Pantry's need is as great, or greater, during this time. Each dollar donated can provide four meals to those most in need. Though we are unable to bring our food offerings together each fourth Sunday, you can still make financial gifts through Shalom (either by mail with "Patchwork Pantry" in the memo line or via [online giving](#)) OR directly to Patchwork Pantry. You can mail your check to 70 South High Street, Harrisonburg, VA 22801 or give online via <https://www.patchworkpantry.org/how-to-help-1>. Thanks for your consideration. -*Mission and Service Team*

Budget Report | April 26 (Shalom-at-Home: 96 Zoom connections)

<u>ACTUAL</u>		<u>BUDGETED</u>	
Weekly Offering	\$3,270.00	Weekly Offering	\$3,648.58
April	\$16,030.00	Avg. Monthly	\$15,810.52
YTD	\$58,196.25	YTD	\$62,025.88

Regular offering, as well as donations to other funds can all be made online at <https://shalommc.breezechms.com/give/online> as well as mailed into EMU, Campus Box 8, Harrisonburg, VA, 22802

Visitors: Welcome to Shalom-at-Home! If you would like to be on our mailing list or be contacted by someone on pastoral team, please send your name and email to office@shalommc.org.

Shalom Mennonite Congregation is a welcoming and inclusive community rooted in Jesus' radical call to love, justice, and peace.

We seek to grow our welcome and inclusion as we deepen our spirituality, build meaningful relationships, work for peace and social justice, and cultivate diverse community connections.

Visit our website at shalommc.org/vision to find out more about who we are, what we do, and what we strive for. You can also read there about our commitment statements regarding inclusion of people who identify as LGBTQIA+, and our policy and practices around maintaining an environment that protects children from abuse.

Address EMU, Campus Box 8, Harrisonburg, VA 22802

Office 1086A Smith Ave

Phone 432-1659

Staff: Brian Bolton, Pastor; Carrie Yoder, Admin Assistant, Nursery & Safe Congregation Policy Administrator; Jooyeon Kim, Bookkeeper.

Administrative Council & Congregational Chair: Anne Martin

Please contact any member of the Safe Congregation Team if you have questions or concerns regarding inappropriate sexual conduct, violence, intimidation, or physical abuse by child-care workers, teachers, or others in the congregation: Kate Clark, 810-1067; Ross Erb, 435-0350; Anne Martin, 432-1086; Brian Bolton, 830-8381.

Halle, halle, hallelujah!

G D G D/F# Em

Hal - le, hal - le, hal - le - lu - jah!

Detailed description: This system contains the first two staves of music. The top staff is in treble clef with a key signature of one sharp (F#) and a 2/4 time signature. The bottom staff is in bass clef with the same key signature and time signature. The melody in the top staff consists of eighth notes and quarter notes. The bass line in the bottom staff consists of quarter notes and eighth notes. Chord symbols G, D, G, D/F#, and Em are placed above the top staff.

C Am7 D

Hal - le, hal - le, hal - le - lu - jah!

Hal - le, hal - le, hal - le - lu, Hal - le - lu - jah!

Hal - le, hal - le, hal - le - lu - jah!

Detailed description: This system contains the second and third staves of music. The top staff continues the melody with chord symbols C, Am7, and D above it. The bottom staff continues the bass line. The lyrics are split across the two staves.

G D G D/F# Em

Hal - le, hal - le, hal - le - lu - jah! Hal - le -

Detailed description: This system contains the fourth and fifth staves of music. The top staff continues the melody with chord symbols G, D, G, D/F#, and Em above it. The bottom staff continues the bass line. The lyrics are split across the two staves.

Am G/D D7

To repeat G C/G G Am/G Final G

lu-jah! Hal - le - lu, Hal - le - lu - jah! jah!

Hal - le - lu - jah! jah!

Detailed description: This system contains the sixth and seventh staves of music. The top staff features a repeat sign and a final cadence. Chord symbols Am, G/D, D7, G, C/G, G, Am/G, and Final G are placed above the staff. The bottom staff continues the bass line. The lyrics are split across the two staves.

Text: Caribbean traditional
 Music: Caribbean traditional; arranged by John L. Bell
 Arrangement copyright © 1990 WGRG The Iona Community (Scotland).
 Used by permission of GIA Publications, Inc., exclusive agent.

Savior, like a shepherd lead us 355

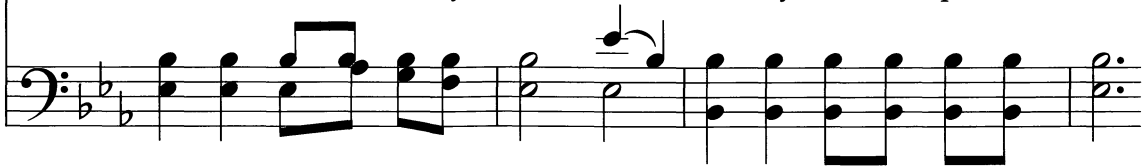
BRADBURY 87. 87. 87 extended



1 Sav - ior, like a shep-herd lead us, much we need thy ten-der care.
 2 We are thine, do thou be - friend us, be the guard-ian of our way.
 3 Ear - ly let us seek thy fa - vor, ear - ly let us do thy will.



In thy pleas-ant pas-tures feed us, for our use thy folds pre - pare.
 Keep thy flock, from sin de - fend us, seek us when we go a - stray.
 Bless - ed Lord and on - ly Sav - ior, with thy love our spir - its fill.



Bless - ed Je - sus! Bless - ed Je - sus! thou hast bought us, thine we are.
 Bless - ed Je - sus! Bless - ed Je - sus! hear, O hear, us when we pray.
 Bless - ed Je - sus! Bless - ed Je - sus! thou hast loved us, love us still.



Bless - ed Je - sus! Bless - ed Je - sus! thou hast bought us, thine we are.
 Bless - ed Je - sus! Bless - ed Je - sus! hear, O hear, us when we pray.
 Bless - ed Je - sus! Bless - ed Je - sus! thou hast loved us, love us still.



65 Abre mis ojos (Open my eyes)

ABRE MIS OJOS Irregular

Spanish: 1,5 A - bre mis o - jos, que quie - ro
 2 A - bre mis o - í - dos, que quie - ro
 3 A - bre mi co - ra - zón, que quie - ro

English: 1,5 O - pen my eyes, Lord. Help me to
 2 O - pen my ears, Lord. Help me to
 3 O - pen my heart, Lord. Help me to

ver co - mo tú. A - bre mis o - jos,
 ír co - mo tú. A - bre mis o - í - dos,
 mar co - mo tú. A - bre mi co - ra - zón,

see your face. O - pen my eyes, Lord.
 hear your voice. O - pen my ears, Lord.
 love like you. O - pen my heart, Lord.

— a - yú - da - me a ver.
 — a - yú - da - me a ír.
 — a - yú - da - me a -

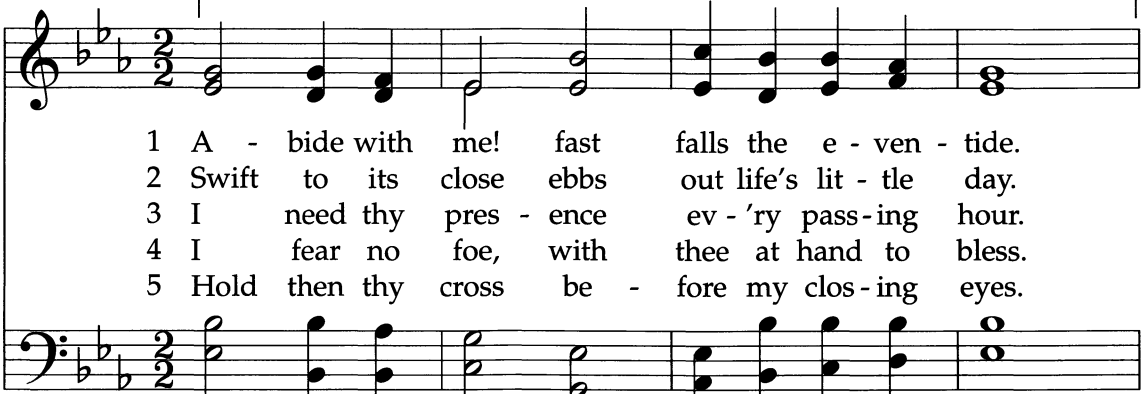
— Help me to see.
 — Help me to hear.
 — Help me to

3 mar. 5 ver.
 3 love. 5 see.

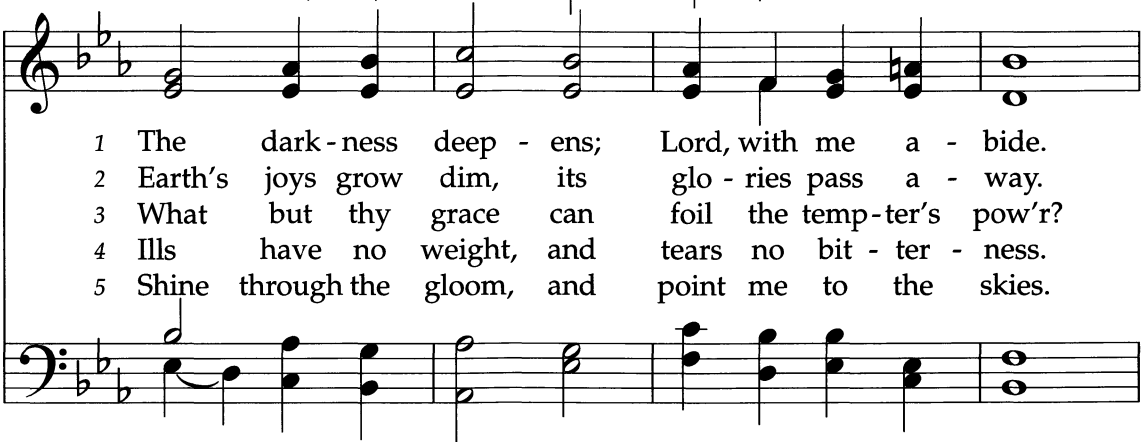
Abide with me

653

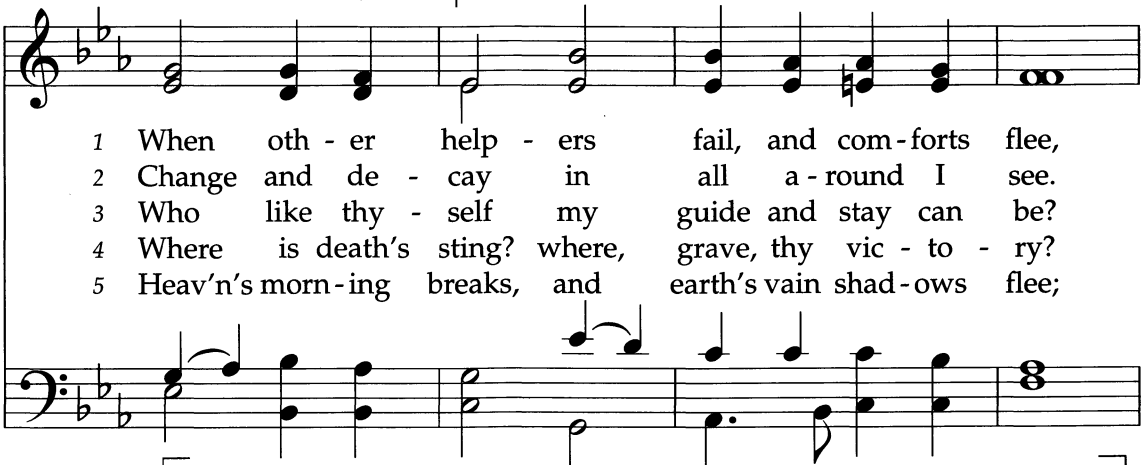
EVENTIDE 10 10. 10 10



1 A - bide with me! fast falls the e - ven - tide.
 2 Swift to its close ebbs out life's lit - tle day.
 3 I need thy pres - ence ev - 'ry pass - ing hour.
 4 I fear no foe, with thee at hand to bless.
 5 Hold then thy cross be - fore my clos - ing eyes.



1 The dark - ness deep - ens; Lord, with me a - bide.
 2 Earth's joys grow dim, its glo - ries pass a - way.
 3 What but thy grace can foil the temp - ter's pow'r?
 4 Ills have no weight, and tears no bit - ter - ness.
 5 Shine through the gloom, and point me to the skies.



1 When oth - er help - ers fail, and com - forts flee,
 2 Change and de - cay in all a - round I see.
 3 Who like thy - self my guide and stay can be?
 4 Where is death's sting? where, grave, thy vic - to - ry?
 5 Heav'n's morn - ing breaks, and earth's vain shad - ows flee;



1 Help of the help - less, O a - bide with me.
 2 O thou who chang - est not, a - bide with me.
 3 Through cloud and sun - shine, O a - bide with me.
 4 I tri - umph still, if thou a - bide with me.
 5 in life and death, O Lord, a - bide with me.